



Greater Rochester
Housing Partnership

BUY THE BLOCK

GREENLINING FOR RACIAL AND ECONOMIC EQUITY

ERASING BARRIERS • HOUSING FIRST

THE PORTLAND

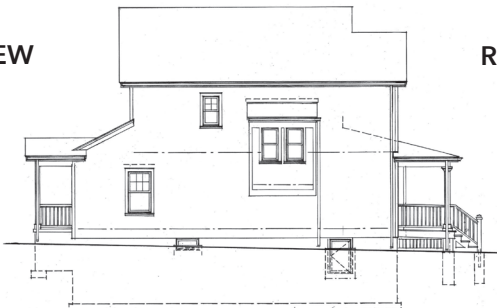


FRONT VIEW



BACK VIEW

LEFT SIDE VIEW



RIGHT SIDE VIEW



2-Story home • 1357 sq. ft. • 3 bedroom • 1.5 bath • full basement • \$112,000

The **Portland** is a two-story, three-bedroom home that is great for the homeowner who enjoys entertaining friends and family. This design offers a spacious first floor open plan with living and dining room areas, and has a kitchen with a peninsula that accommodates three stools. Window features provide an abundance of natural light in the home.

Floor plans and additional special features on the back.

This house is an Energy Star Certified Home – Version 3.1; HERS Index 50

FOR MORE INFORMATION, VISIT: cityofrochester.gov/buytheblock

 Malik D. Evans, Mayor



City of Rochester, NY
Rochester City Council



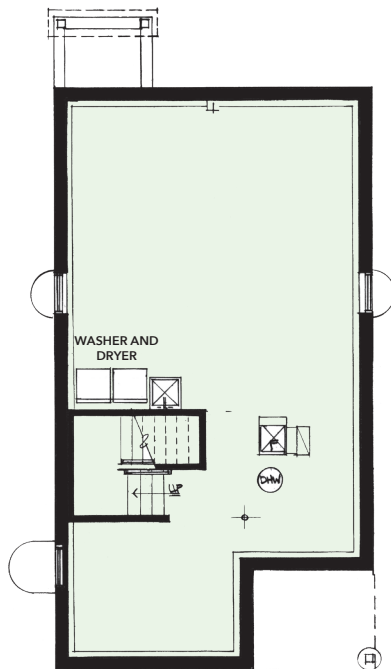
Greater Rochester
Housing Partnership

BUY THE BLOCK

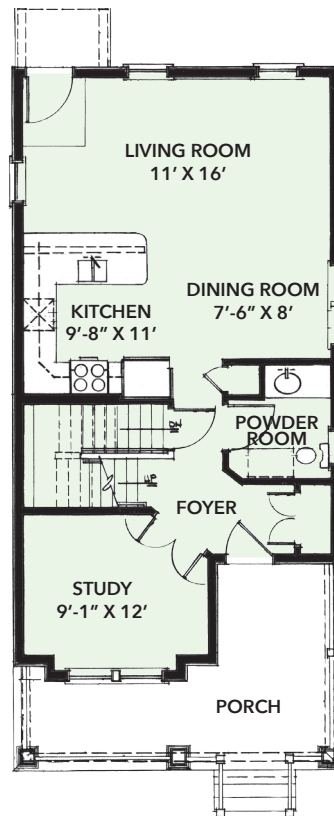
GREENLINING FOR RACIAL AND ECONOMIC EQUITY

ERASING BARRIERS • HOUSING FIRST

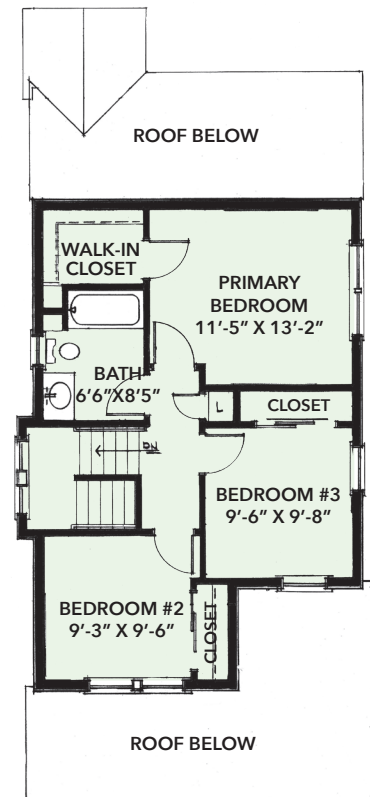
THE PORTLAND



BASEMENT



FIRST FLOOR



SECOND FLOOR

SPECIAL FEATURES: • Full package of Energy Star appliances: refrigerator, stove, range, dishwasher, washer, dryer • Electric heat pump heating and cooling systems (central air) • Detached garage

Basement: • 12 course block basement • Egress basement window so basement can be usable
• Laundry hook-up for washer and dryer

First Floor: • Defined entry foyer with adjacent office/study • Rear visitable entrance with 1:20 low profile sidewalk from the house to the driveway • Fully visitable 1st floor powder room • Split stair case going up to the 2nd floor with a box bay window at the stair landing which makes it easier to bring furniture upstairs

Second Floor: • Large primary bedroom with walk in closet • 2 additional spacious bedrooms with large closets
• Full size main bathroom off the bedroom hallways

FOR MORE INFORMATION, VISIT: cityofrochester.gov/buytheblock